

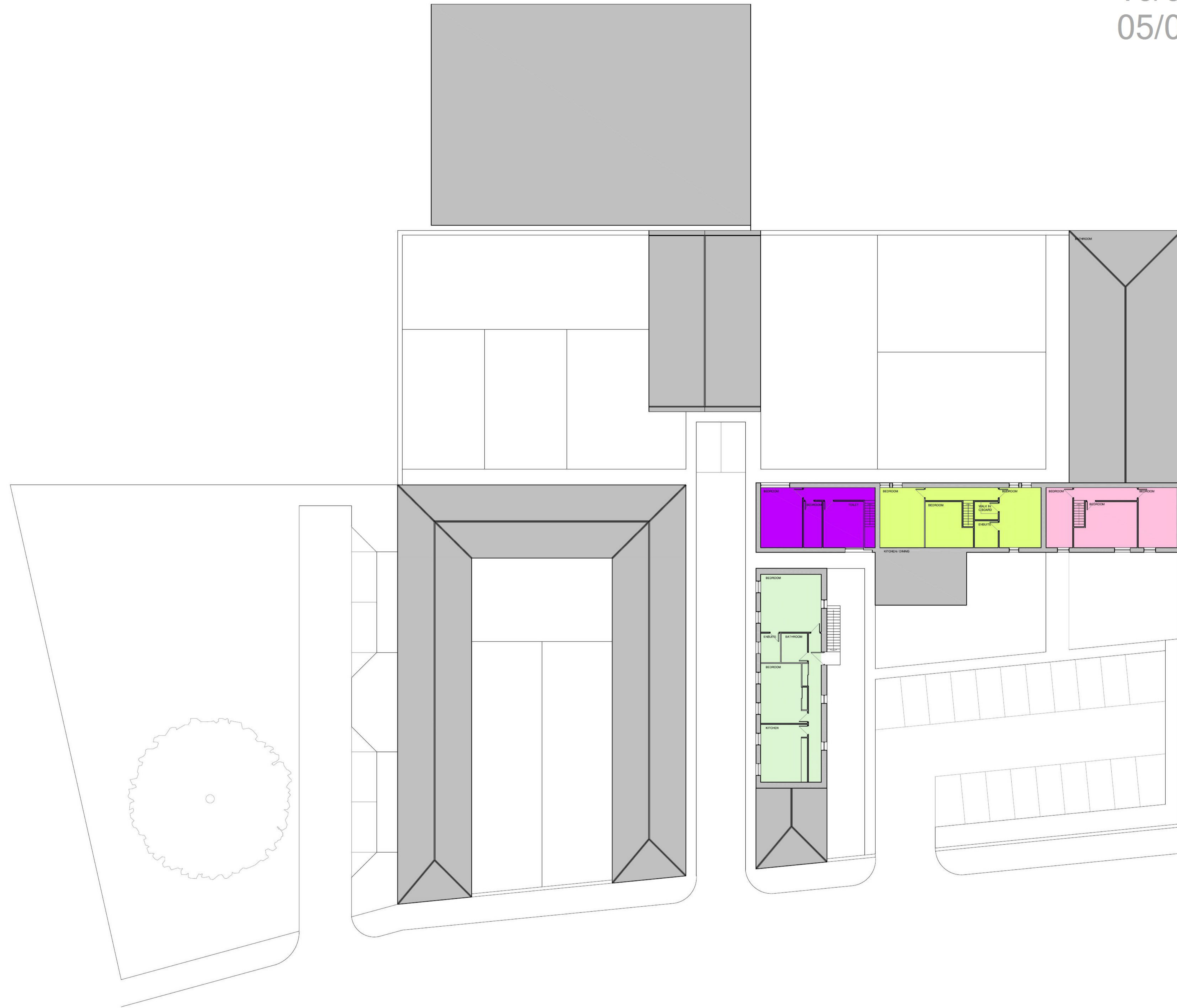
16/01371/FUL
05/02/2018



Scottish Borders Council
Town And Country
Planning (Scotland) Act
1997

REFUSED

subject to the
requirements of the
associated Decision
Notice

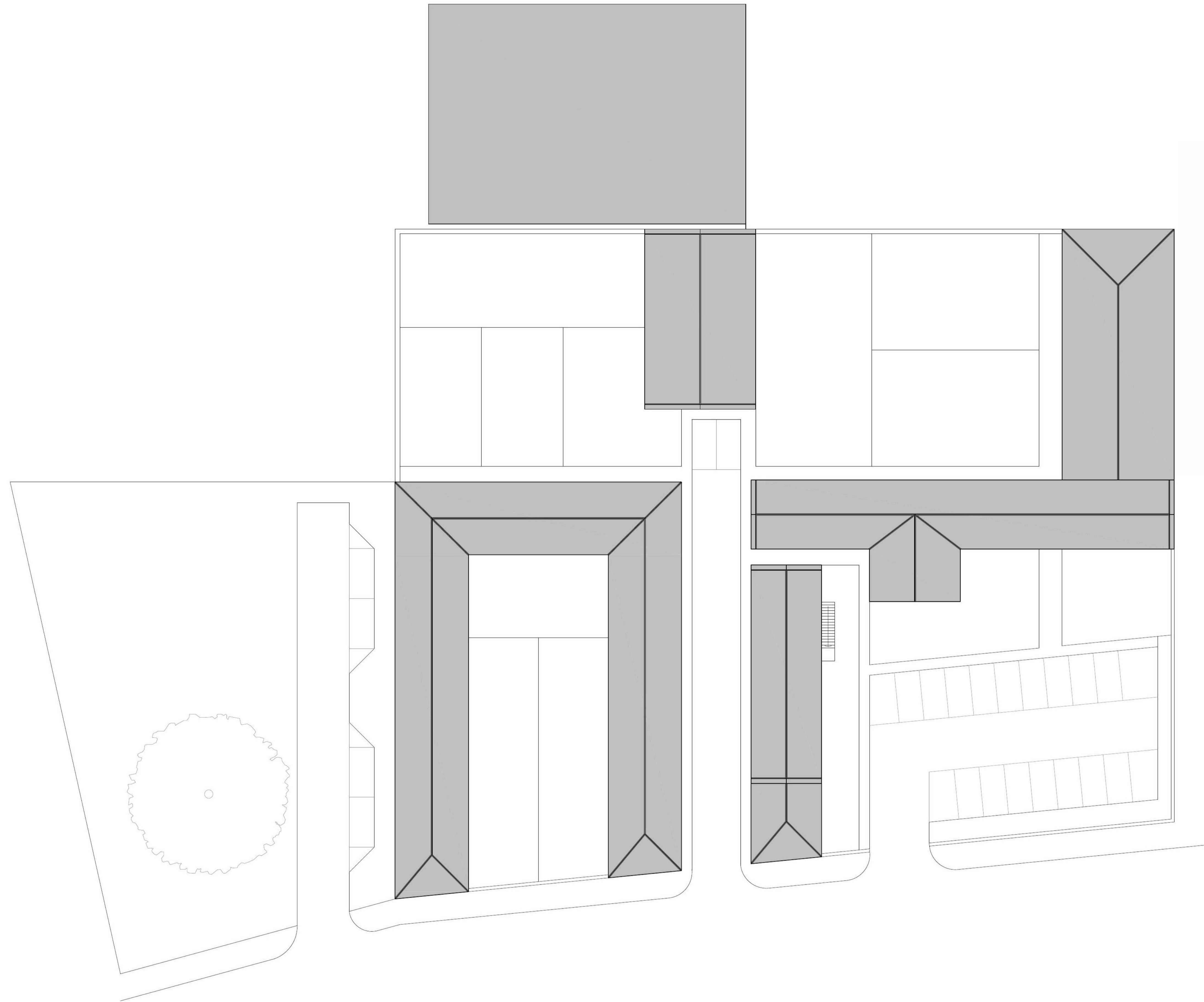


- PLOT 1 - 4 BEDROOM @ 160m²
- PLOT 2 - 2 BEDROOM @ 72m²
- PLOT 3 - 2 BEDROOM @ 130m²
- PLOT 4 - 2 BEDROOM @ 75m²
- PLOT 5 - 3 BEDROOM @ 127m²
- PLOT 6 - 3 BEDROOM @ 233m²
- PLOT 7 - 3 BEDROOM @ 215m²
- PLOT 8 - 3 BEDROOM @ 127m²
- PLOT 9 - 2 BEDROOM @ 83m²
- PLOT 10 - 3 BEDROOM @ 129m²
- PLOT 11 - 3 BEDROOM @ 157m²
- PLOT 12 - 2 BEDROOM @ 115m²
- PLOT 13 - 3 BEDROOM @ 200m²
- PLOT 14 - 3 BEDROOM @ 200m²

**Scottish Borders Council
Town And Country
Planning (Scotland) Act
1997**

REFUSED

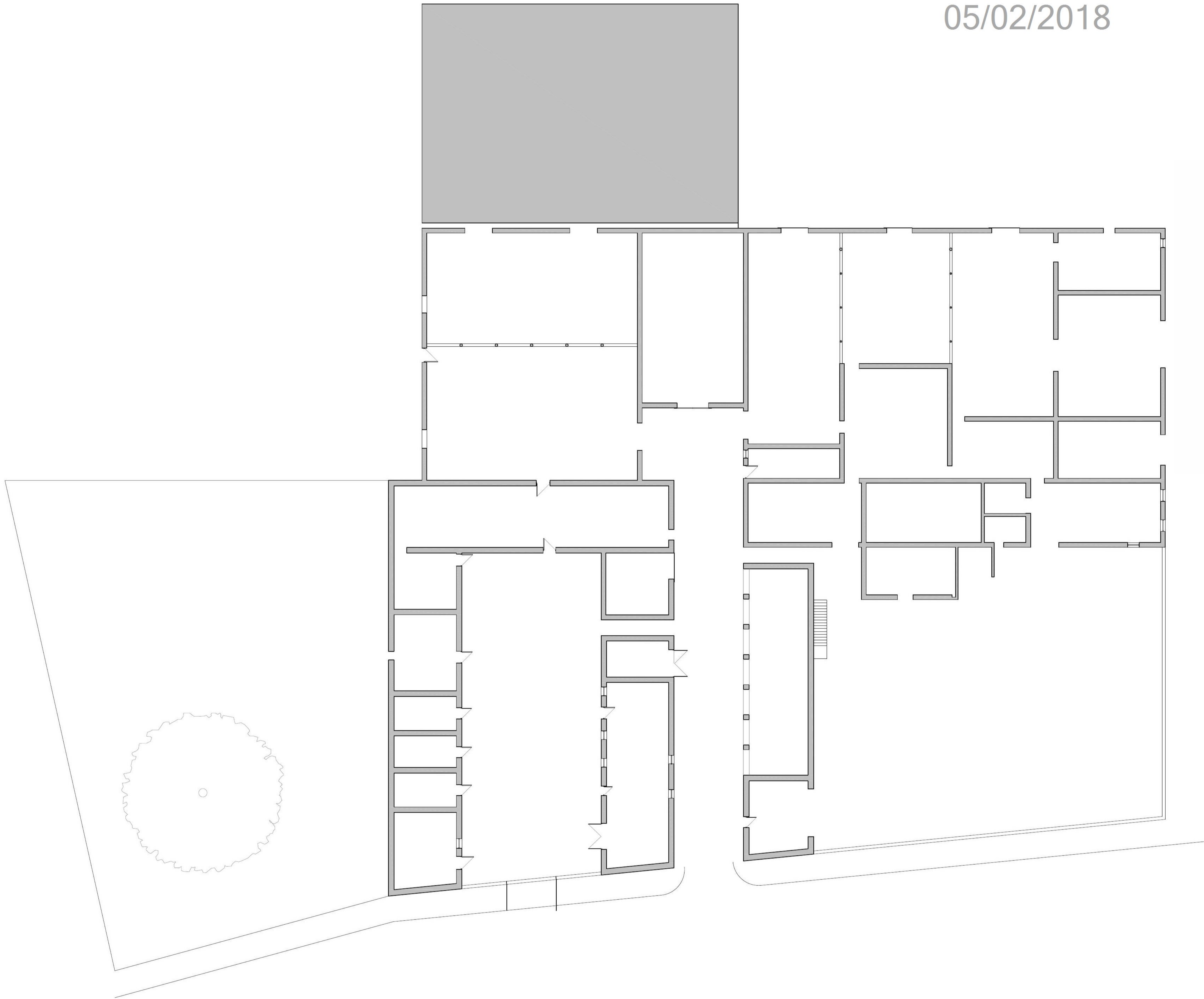
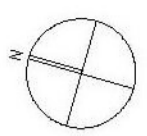
subject to the
requirements of the
associated Decision
Notice



Scottish Borders Council
Town And Country
Planning (Scotland) Act
1997

REFUSED

subject to the
requirements of the
associated Decision
Notice



Scottish Borders Council
Town And Country
Planning (Scotland) Act
1997

REFUSED

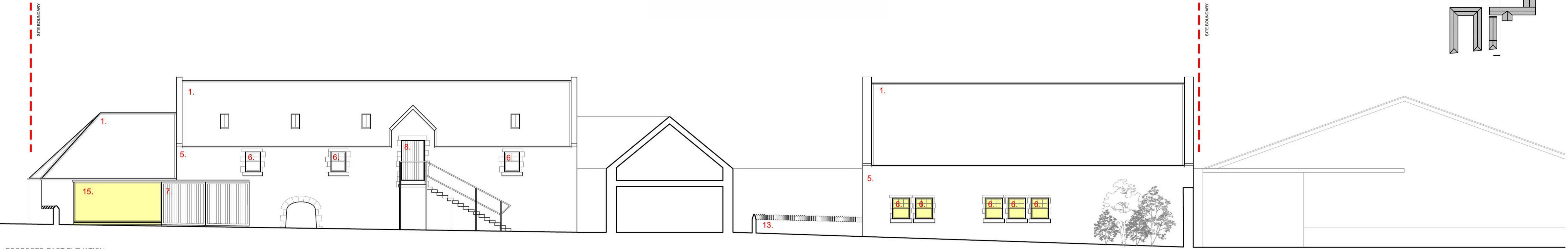
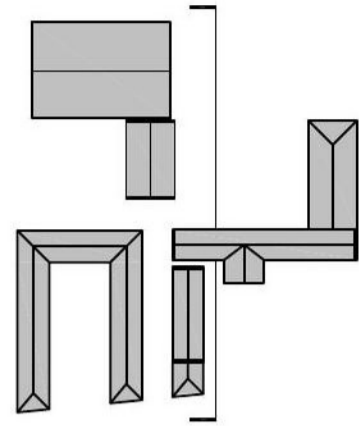
subject to the
requirements of the
associated Decision
Notice

- 1. SLATE ROOFING TILE
- 2. METAL ROOFLIGHT
- 3. NEW SLATE ROOF
- 4. CORRUGATED METAL SHEETING
- 5. SANDSTONE
- 6. NEW TIMBER SASH CASE WINDOW
- 7. NEW TIMBER SLIDING DOORS
- 8. NEW TIMBER DOOR
- 9. TIMBER CLADDING
- 10. BLACK PAINTED METAL GUTTERING
- 11. PAINTED METAL HANDRAILS
- 12. PAINTED METAL GRILLE
- 13. SANDSTONE DIVIDING WALLS TO MATCH EXISTING
- 14. SANDSTONE INFILL
- 15. DARK GREY ALUMINIUM WINDOW
- 16. DARK GREY ALUMINIUM WINDOW WITH OPAQUE GLASS

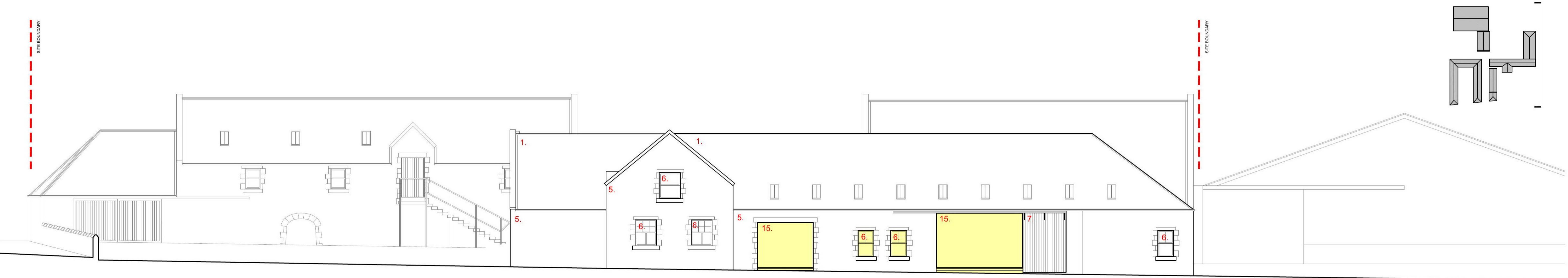
Scottish Borders Council
Town And Country
Planning (Scotland) Act
1997

REFUSED

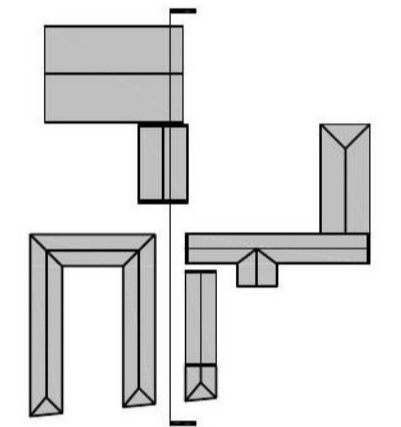
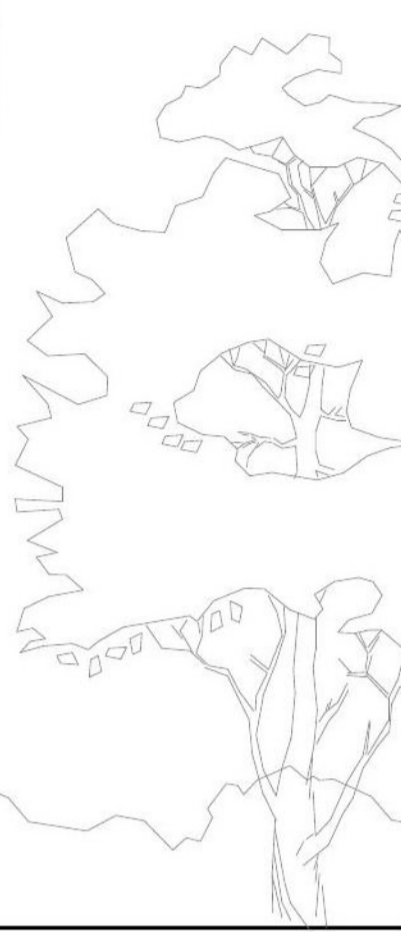
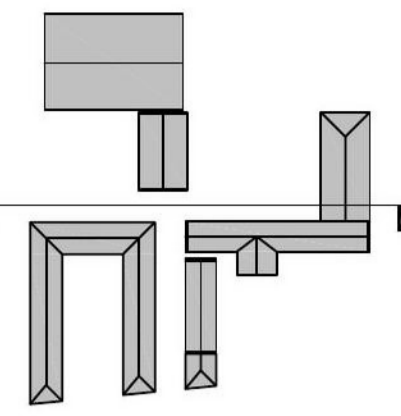
subject to the
requirements of the
associated Decision
Notice



PROPOSED EAST ELEVATION



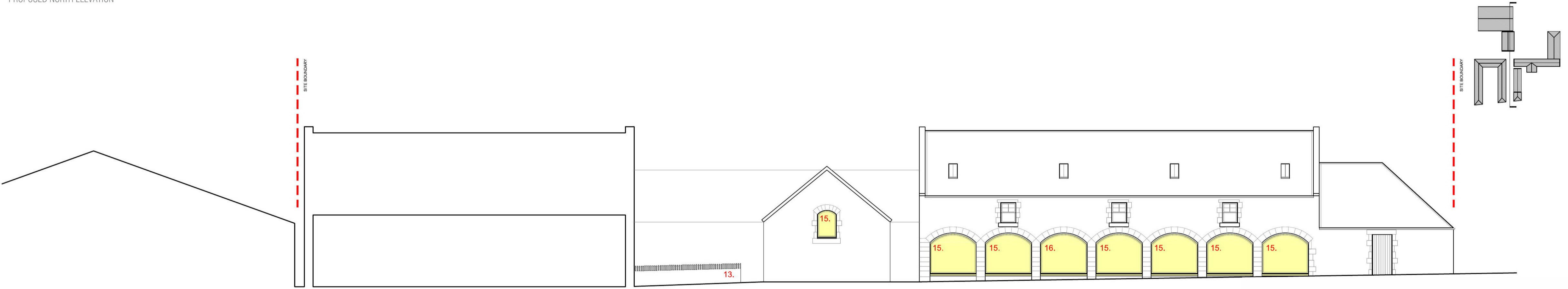
PROPOSED EAST ELEVATION



- 1. SLATE ROOFING TILE
- 2. METAL ROOFLIGHT
- 3. NEW SLATE ROOF
- 4. CORRUGATED METAL SHEETING
- 5. SANDSTONE
- 6. NEW TIMBER SASH CASE WINDOW
- 7. NEW TIMBER SLIDING DOORS
- 8. NEW TIMBER DOOR
- 9. TIMBER CLADDING
- 10. BLACK PAINTED METAL GUTTERING
- 11. PAINTED METAL HANDRAILS
- 12. PAINTED METAL GRILLE
- 13. SANDSTONE DIVIDING WALLS TO MATCH EXISTING
- 14. SANDSTONE INFILL
- 15. DARK GREY ALUMINIUM WINDOW
- 16. DARK GREY ALUMINIUM WINDOW WITH OPAQUE GLASS
- 17. NEW PEND TO FORM ACCESS TO PLOT 6



PROPOSED NORTH ELEVATION

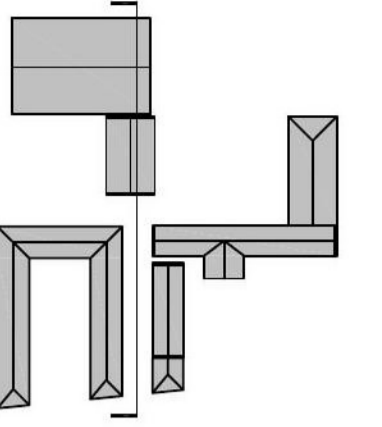


PROPOSED WEST ELEVATION

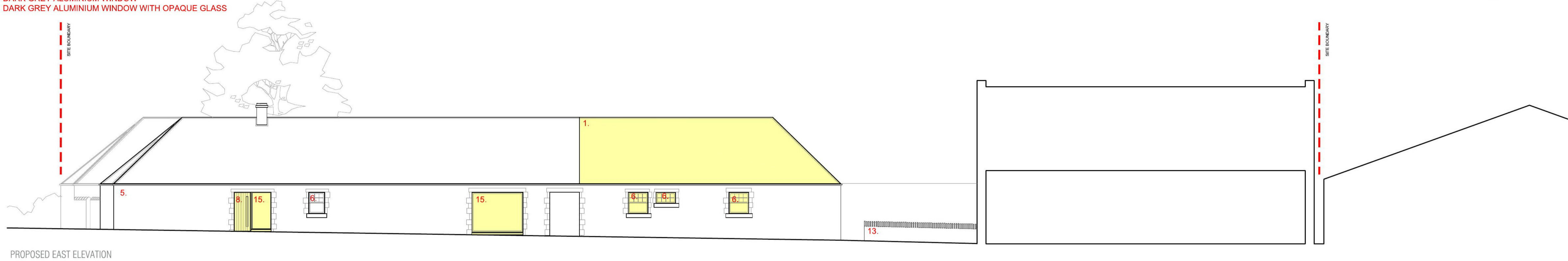
Scottish Borders Council
Town And Country
Planning (Scotland) Act
1997

REFUSED

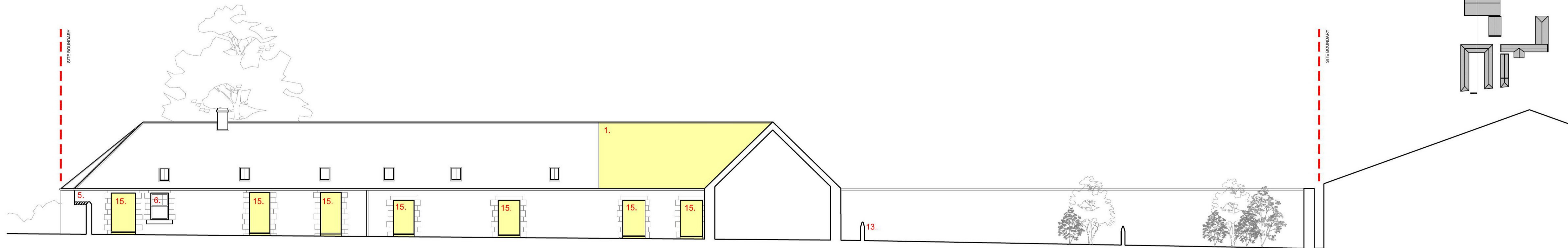
subject to the
requirements of the
associated Decision
Notice



- 1. SLATE ROOFING TILE
- 2. METAL ROOFLIGHT
- 3. NEW SLATE ROOF
- 4. CORRUGATED METAL SHEETING
- 5. SANDSTONE
- 6. NEW TIMBER SASH CASE WINDOW
- 7. NEW TIMBER SLIDING DOORS
- 8. NEW TIMBER DOOR
- 9. TIMBER CLADDING
- 10. BLACK PAINTED METAL GUTTERING
- 11. PAINTED METAL HANDRAILS
- 12. PAINTED METAL GRILLE
- 13. SANDSTONE DIVIDING WALLS TO MATCH EXISTING
- 14. SANDSTONE INFILL
- 15. DARK GREY ALUMINIUM WINDOW WITH OPAQUE GLASS
- 16. DARK GREY ALUMINIUM WINDOW WITH OPAQUE GLASS



PROPOSED EAST ELEVATION



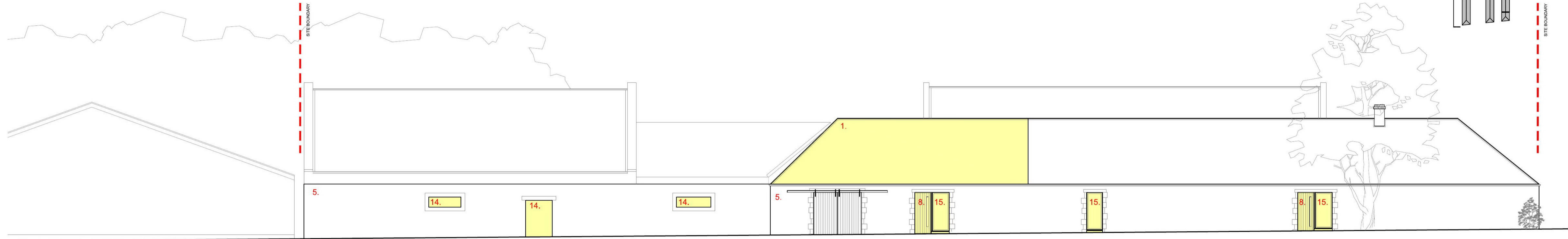
PROPOSED EAST ELEVATION

Scottish Borders Council
Town And Country
Planning (Scotland) Act
1997

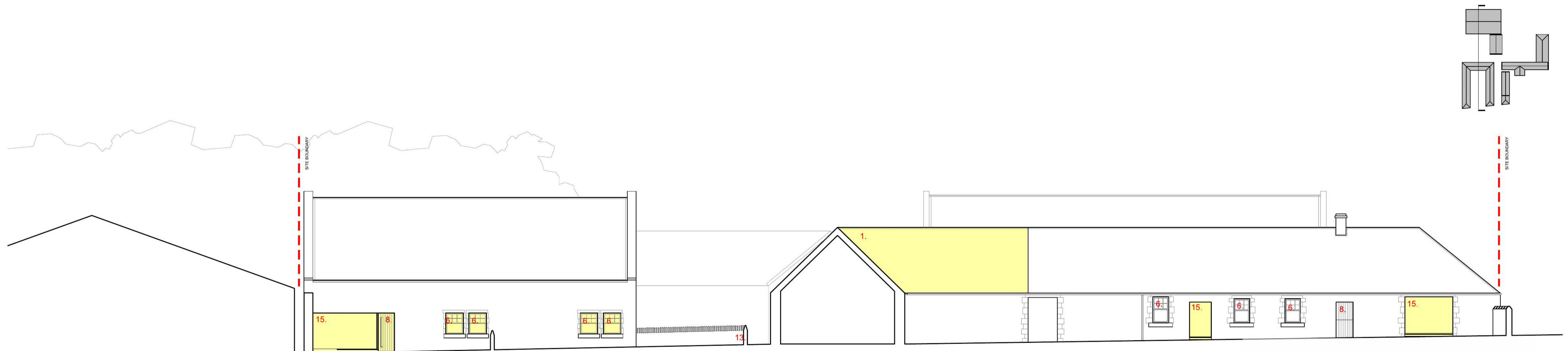
REFUSED

subject to the
requirements of the
associated Decision
Notice

1. SLATE ROOFING TILE
2. METAL ROOFLIGHT
3. NEW SLATE ROOF
4. CORRUGATED METAL SHEETING
5. SANDSTONE
6. NEW TIMBER SASH CASE WINDOW
7. NEW TIMBER SLIDING DOORS
8. NEW TIMBER DOOR
9. TIMBER CLADDING
10. BLACK PAINTED METAL GUTTERING
11. PAINTED METAL HANDRAILS
12. PAINTED METAL GRILLE
13. SANDSTONE DIVIDING WALLS TO MATCH EXISTING
14. SANDSTONE INFILL
15. DARK GREY ALUMINIUM WINDOW WITH OPAQUE GLASS
16. DARK GREY ALUMINIUM WINDOW WITH OPAQUE GLASS



PROPOSED WEST ELEVATION

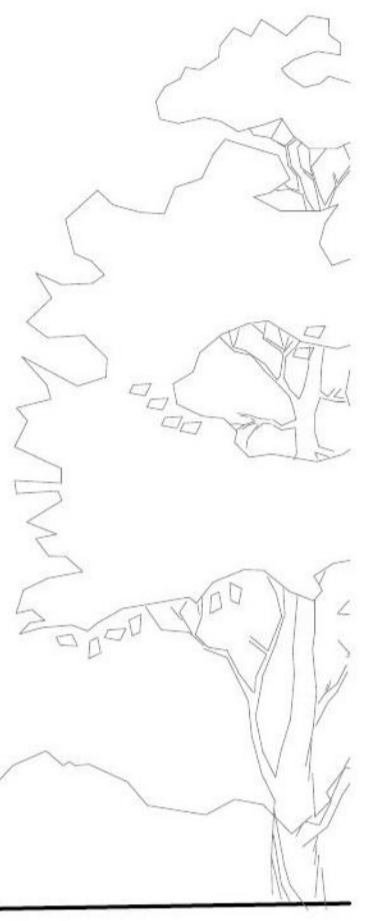
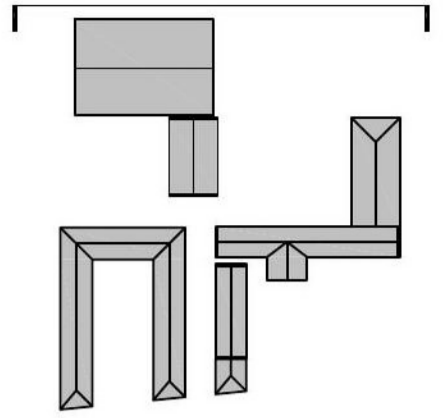


PROPOSED WEST ELEVATION

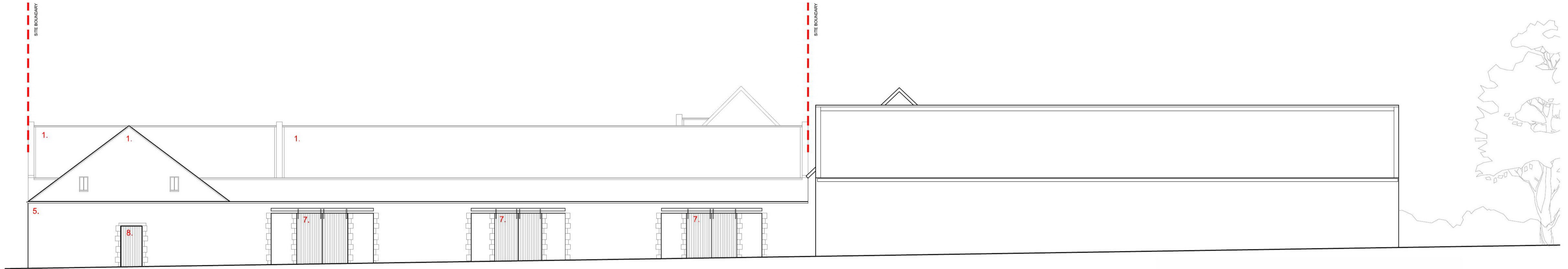
Scottish Borders Council
Town And Country
Planning (Scotland) Act
1997

REFUSED

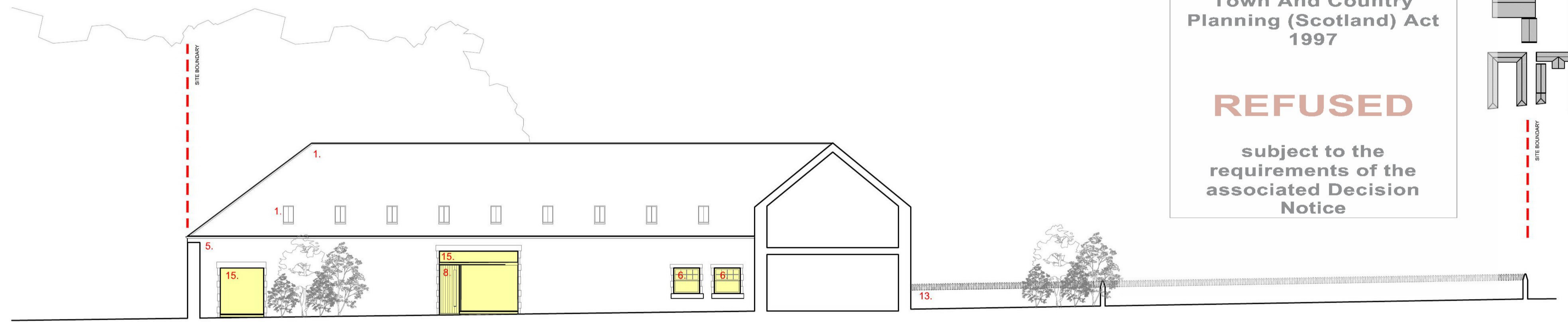
subject to the
requirements of the
associated Decision
Notice



- 1. SLATE ROOFING TILE
- 2. METAL ROOFLIGHT
- 3. NEW SLATE ROOF
- 4. CORRUGATED METAL SHEETING
- 5. SANDSTONE
- 6. NEW TIMBER SASH CASE WINDOW
- 7. NEW TIMBER SLIDING DOORS
- 8. NEW TIMBER DOOR
- 9. TIMBER CLADDING
- 10. BLACK PAINTED METAL GUTTERING
- 11. PAINTED METAL HANDRAILS
- 12. PAINTED METAL GRILLE
- 13. SANDSTONE DIVIDING WALLS TO MATCH EXISTING
- 14. SANDSTONE INFILL
- 15. DARK GREY ALUMINIUM WINDOW
- 16. DARK GREY ALUMINIUM WINDOW WITH OPAQUE GLASS



PROPOSED NORTH ELEVATION

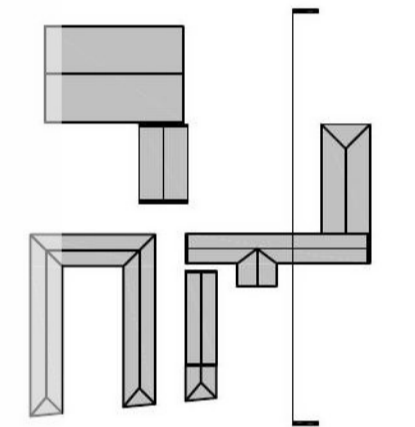


PROPOSED WEST ELEVATION

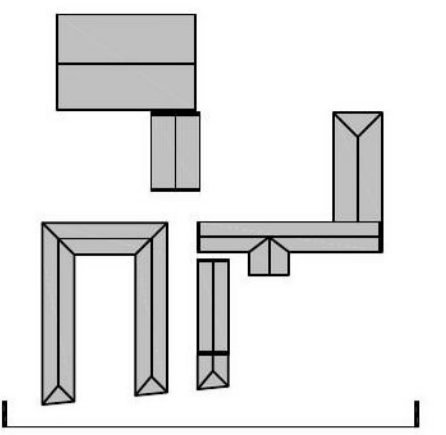
Scottish Borders Council
Town And Country
Planning (Scotland) Act
1997

REFUSED

subject to the
requirements of the
associated Decision
Notice



SITE BOUNDARY



- 1. SLATE ROOFLIGHT TILE
- 2. METAL ROOFLIGHT
- 3. NEW SLATE ROOF
- 4. CORRUGATED METAL SHEETING
- 5. SANDSTONE
- 6. NEW TIMBER SASH CASE WINDOW
- 7. NEW TIMBER SLIDING DOORS
- 8. NEW TIMBER DOOR
- 9. TIMBER CLADDING
- 10. BLACK PAINTED METAL GUTTERING
- 11. PAINTED METAL HANDRAILS
- 12. PAINTED METAL GRILLE
- 13. SANDSTONE DIVIDING WALLS TO MATCH EXISTING
- 14. SANDSTONE INFILL
- 15. DARK GREY ALUMINIUM WINDOW
- 16. DARK GREY ALUMINIUM WINDOW WITH OPAQUE GLASS



PROPOSED SOUTH ELEVATION

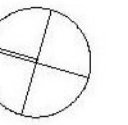


PROPOSED SOUTH ELEVATION

Scottish Borders Council
Town And Country
Planning (Scotland) Act
1997

REFUSED

subject to the
requirements of the
associated Decision
Notice



- PLOT 1 - 4 BEDROOM @ 160m²
- PLOT 2 - 2 BEDROOM @ 72m²
- PLOT 3 - 2 BEDROOM @ 130m²
- PLOT 4 - 2 BEDROOM @ 75m²
- PLOT 5 - 3 BEDROOM @ 127m²
- PLOT 6 - 3 BEDROOM @ 233m²
- PLOT 7 - 3 BEDROOM @ 215m²
- PLOT 8 - 3 BEDROOM @ 127m²
- PLOT 9 - 2 BEDROOM @ 83m²
- PLOT 10 - 3 BEDROOM @ 129m²
- PLOT 11 - 2 BEDROOM @ 157m²
- PLOT 12 - 2 BEDROOM @ 115m²
- PLOT 13 - 3 BEDROOM @ 200m²
- PLOT 14 - 3 BEDROOM @ 200m²

ALL PATHS FORMED FROM INDIAN SANDSTONE
ALL VEHICULAR AREAS TO BE CRUSHED GRAVEL
ALL GARDEN AREAS TURFED
DIVIDING GARDEN WALLS TO BE SANDSTONE TO MATCH EXISTING

**Scottish Borders Council
Town And Country
Planning (Scotland) Act
1997**

REFUSED

subject to the
requirements of the
associated Decision
Notice